



**Contract
Metrology
Services**

ABOUT EXACT METROLOGY

Exact Metrology, Inc. is a full service measurement services company that provides on-site inspection, reverse engineering, non-contact laser scanning, and 2D/3D digitizing services as well as contract programming, software training, part programming, and measurement equipment implementation. Our complete range of portable CMM and scanning equipment allows us to handle most measurement tasks at the customer's facility. These technologies, together with our decades of combined experience, gives us the ability to measure everything from small parts to parts over 30 meters as well as long-range, large format scanning for architecture, civil engineering and surveying applications.



TABLE OF CONTENTS

Contact Measurement

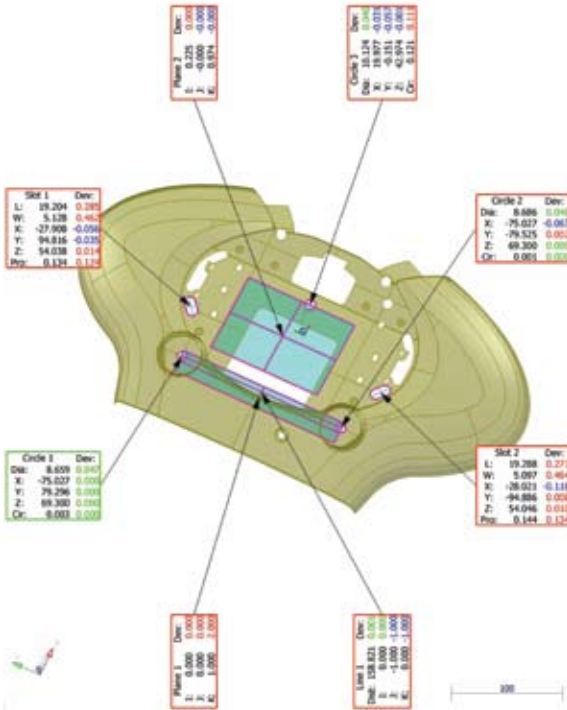
Non-Contact Measurement

Reverse Engineering

Long Range Scanning

Equipment Solutions

Contact Us



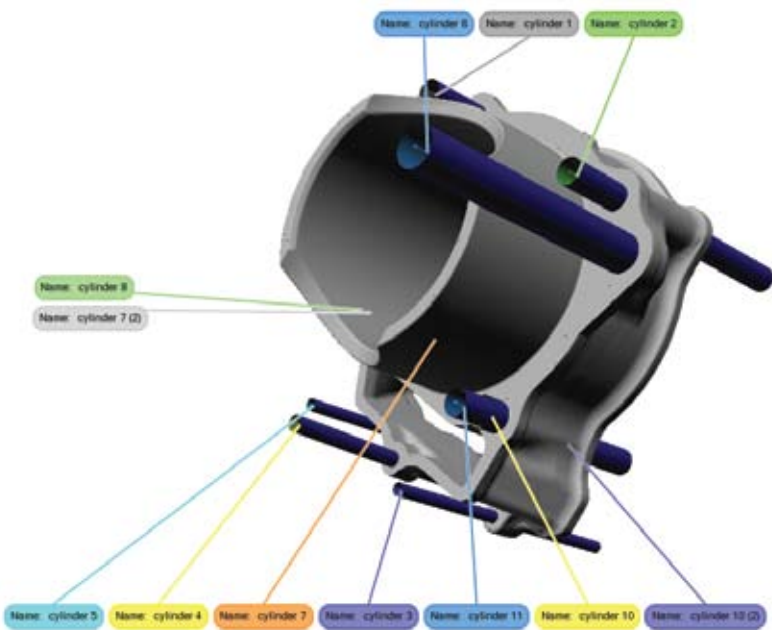
CONTACT MEASUREMENT

Contact Measurement is a method of collecting single points relative to each other in small or large volumes. This information can then be used for evaluation, inspection, layout or basic geometric reverse engineering. Exact Metrology is pleased to offer contract service options as well as hardware and software solutions for contact measurement.



There are a wide range of solutions for contact measurement, and two types of systems solutions are available for portable CMMs:

1. For capturing localized or small volume information, digitizing or articulating arms are ideal.
2. For larger volumetric projects, optical solutions including laser trackers and photogrammetry portable CMMs are ideal.



NON-CONTACT MEASUREMENT

Three dimensional white light or laser scanning, sometimes called "digitizing," is the process of capturing the geometry of existing physical objects through the use of laser-emitting camera-like devices. Our laser scanning technologies capture the 3D definition of both small and large objects.



Scan Data

CAD

Overlay



Color Analysis Report

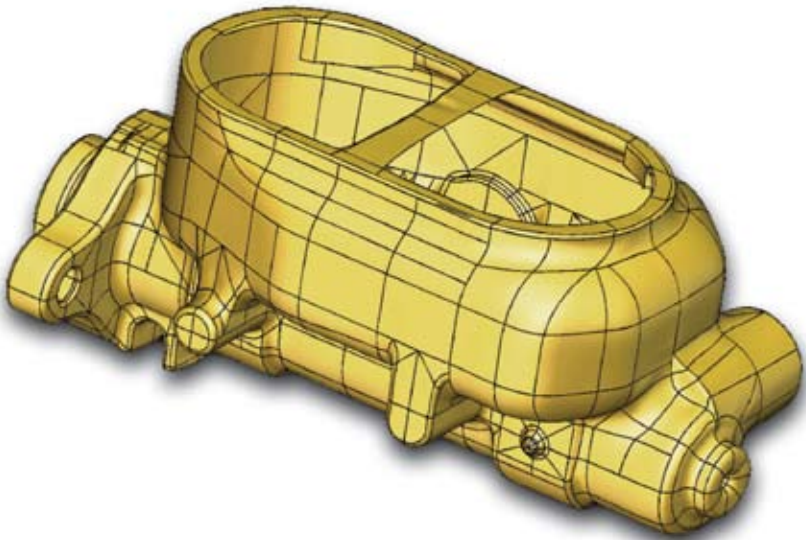
Exact Metrology offers 3D non-contact measurement services for a variety of applications and industries. Just a few of those applications include:

- Reverse engineering
- Rapid prototyping
- Non-contact inspection
- Visualization for print, web, and/or video



REVERSE ENGINEERING

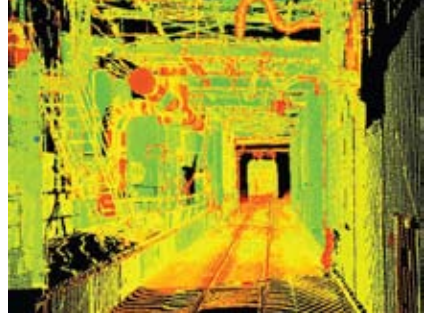
Reverse Engineering is the process of taking measurements of an existing part or object and then creating an exact CAD replica. The piece is intricately measured using our portable non-contact equipment, and a CAD model that reflects the original design of the object is then created.



Reverse Engineering can be extremely useful when you have a part or object, but do not have the original prints or design. In addition to the generation of the model from the existing object, Exact Metrology can incorporate other information (customer specifications, industrial standards, information from existing prints, etc.) to provide a complete CAD model.



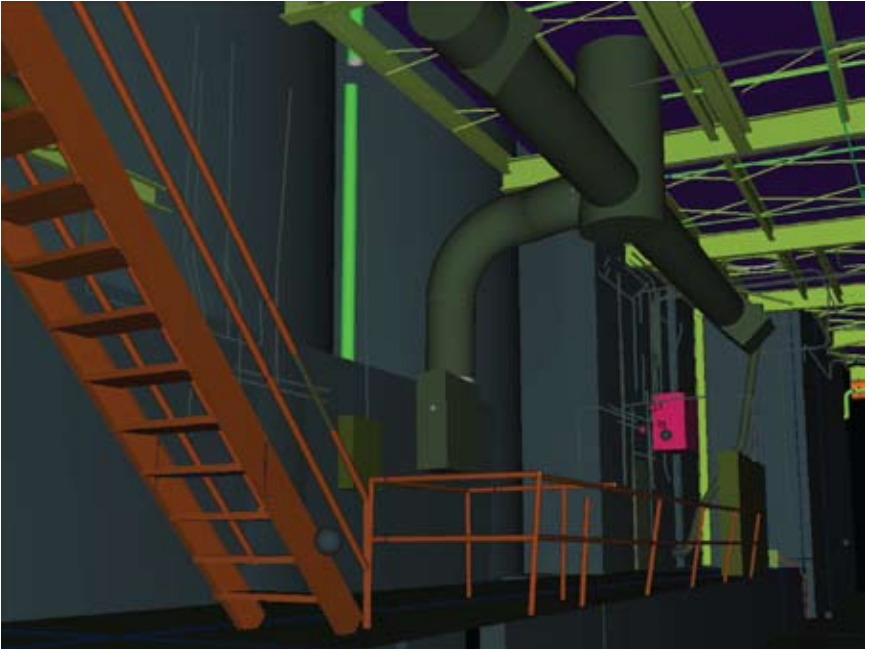
Photo



Point Cloud Data

LONG RANGE SCANNING

Our portable scanning technology allows our team to take detailed 360° 3D snapshots of any structure, bridge, plot of land, plant or process operation with millimeter accuracy. This allows for scans of complex, hard-to-reach, or dangerous environments to be completed safely and accurately.



Final CAD Data

A few applications include:

- Historical and legal archive
- Structural analysis and testing
- Online virtual showcases and tours



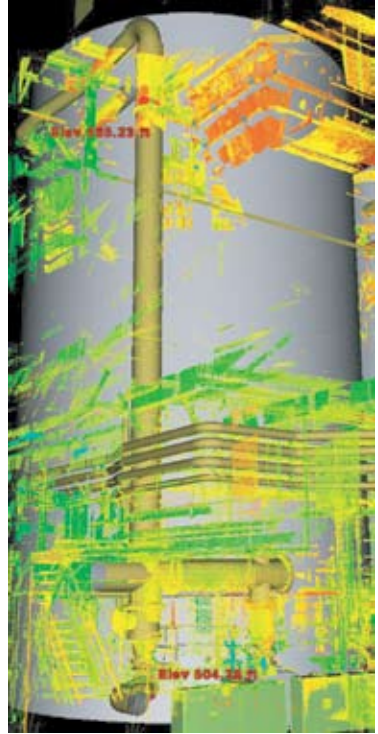
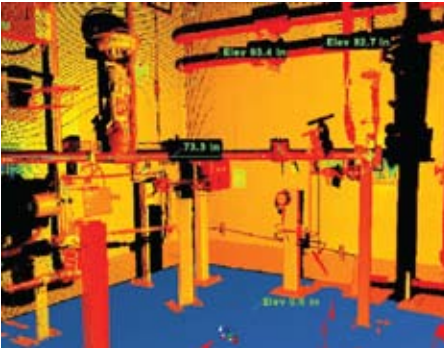
EQUIPMENT SOLUTIONS

Exact Metrology also sells, services, and implements metrology equipment from industry leaders. Our highly trained team can configure our comprehensive lineup of portable CMMs, laser scanners, 3D metrology & digitization equipment and software for almost any application.



Our equipment solutions include products from:

- ROMER
- Leica Geosystems
- Metronor
- Breuckmann
- Perceptron
- InnovMetric
- Delcam

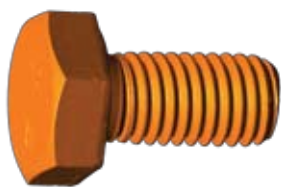
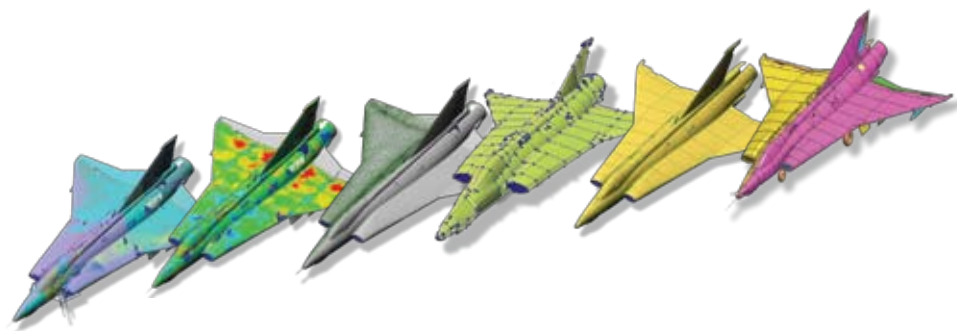


CONTACT US

To request additional information or a quotation, please contact us:

Telephone: 866-722-2600

Email: info@exactmetrology.com





Superior Measurement
That Goes the Distance

Exact Metrology Inc.
4766 Interstate Dr.
Cincinnati, OH 45246

Telephone: 866-722-2600

Email: info@exactmetrology.com

ROMER and Leica Geosystems images used in this brochure are copyright Hexagon AB or its subsidiaries.